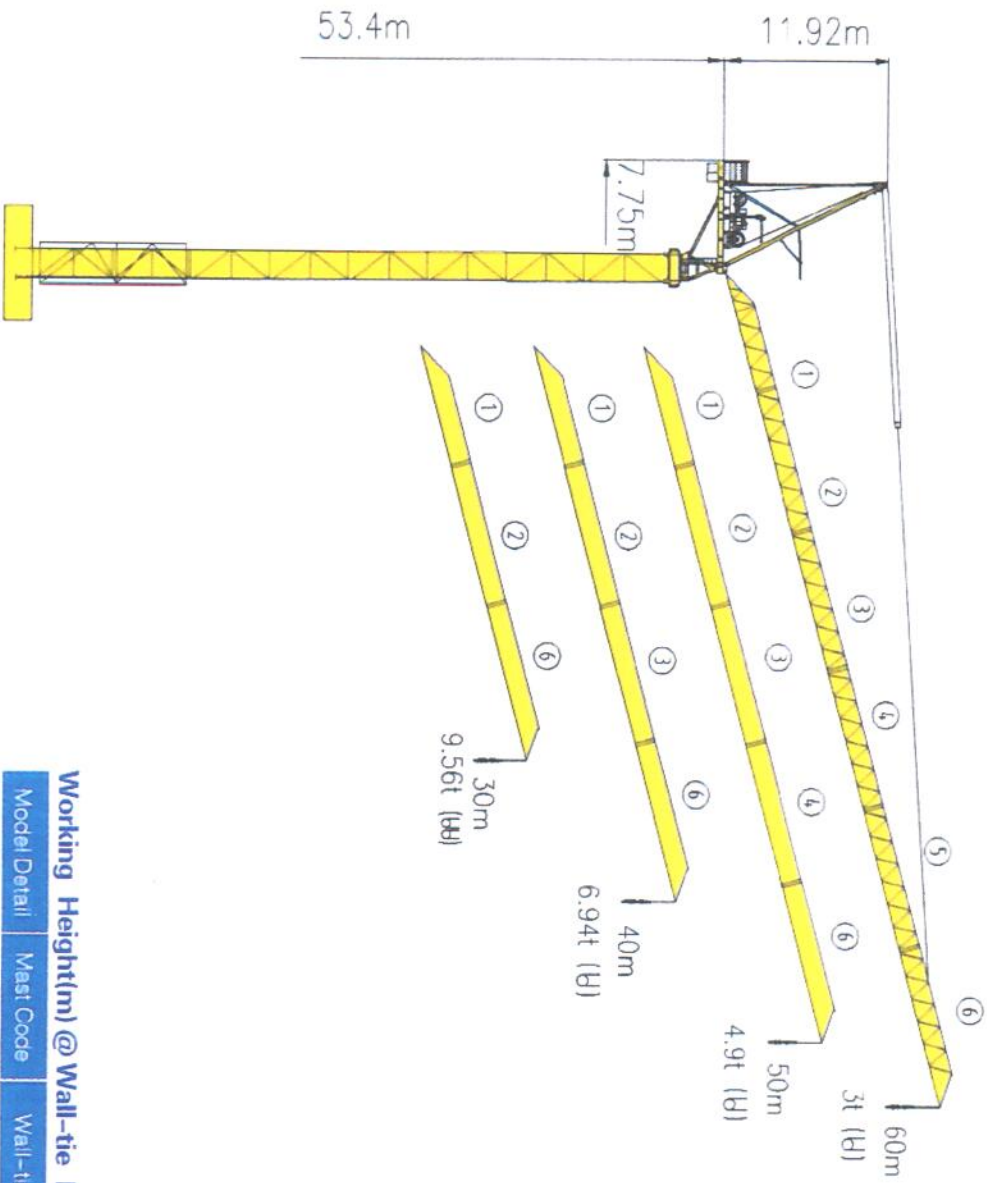


TCR6030-16

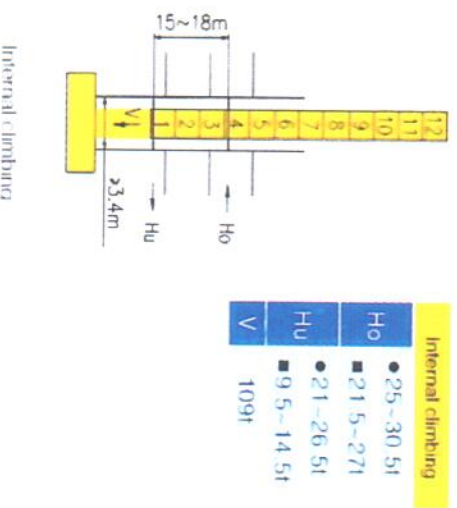
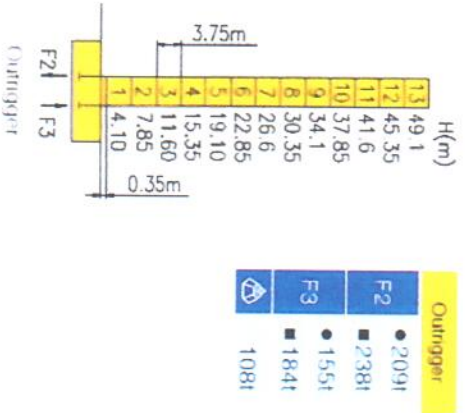


Counter-jib ballast

Length (m)	Weight (kg)	PH-21000	PH-23000	PH-24000	PH-24000A	PH-24000B
60m	245,000	1	2	2	1	1
50m	235,000	0	2	2	1	1
40m	205,000	0	1	2	1	1
30m	175,000	0	0	2	1	1

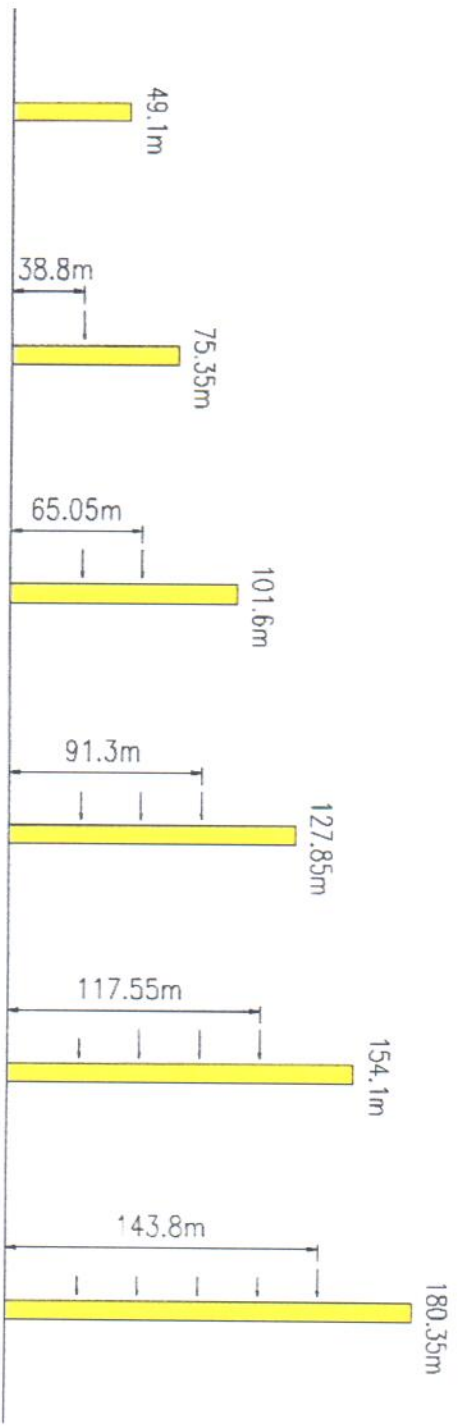
Working Height(m) @ Wall-tie Location(m)

Model/Detail	Mast Code	Wall-tie #1	Wall-tie #2	Wall-tie #3	Wall-tie #4	Wall-tie #
TCR6030-16	HQ1-C	75.35 @ 38.8	101.6 @ 65.05	127.85 @ 91.3	154.1 @ 117.55	180.35 @ 141.1



● Reaction in service ■ Reaction out of service
 ⊕ Without load and ballast with longer jib and maximum height
 ⊖ For more exacting conditions, consult us!


Anchorage



TCR6030-16

Load diagrams

14

 R(m)	Max Capacity m/t	20	23	25	28	30	33	35	38	40	43	45	48	50	53	55	58	60		
		60m (R=59,79)	4.73—31.17m 8t			8			7.51	6.91	6.13	5.68	5.09	4.75	4.29	4.03	3.68	3.47	3.16	3
50m (R=49,84)	4—34.67m 8t			8			8	7.97	7.14	6.64	5.99	5.6	5.11	4.85						4.85 (49.84m)
	4—17.3m 16t	13.94	12.14	11.11	9.81	9.08	8.13	7.6	6.91	6.5	5.93	5.55	4.97	4.72						4.72 (49.84m)
40m (R=39,9)	3.3—35.08m 8t			8				8	7.32	6.94										6.94 (39.9m)
	3.3—17.7m 16t	14.62	12.52	11.4	10.05	9.31	8.4	7.9	7.19	6.81										6.81 (39.9m)
30m (R=29,9)	2.58—30m 8t			8																
	2.58—18.8m 16t	15.11	12.88	11.7	10.29	9.56														9.56 (29.9m)

